



RICHMOND-UPON-THAMES TW9 2NQ



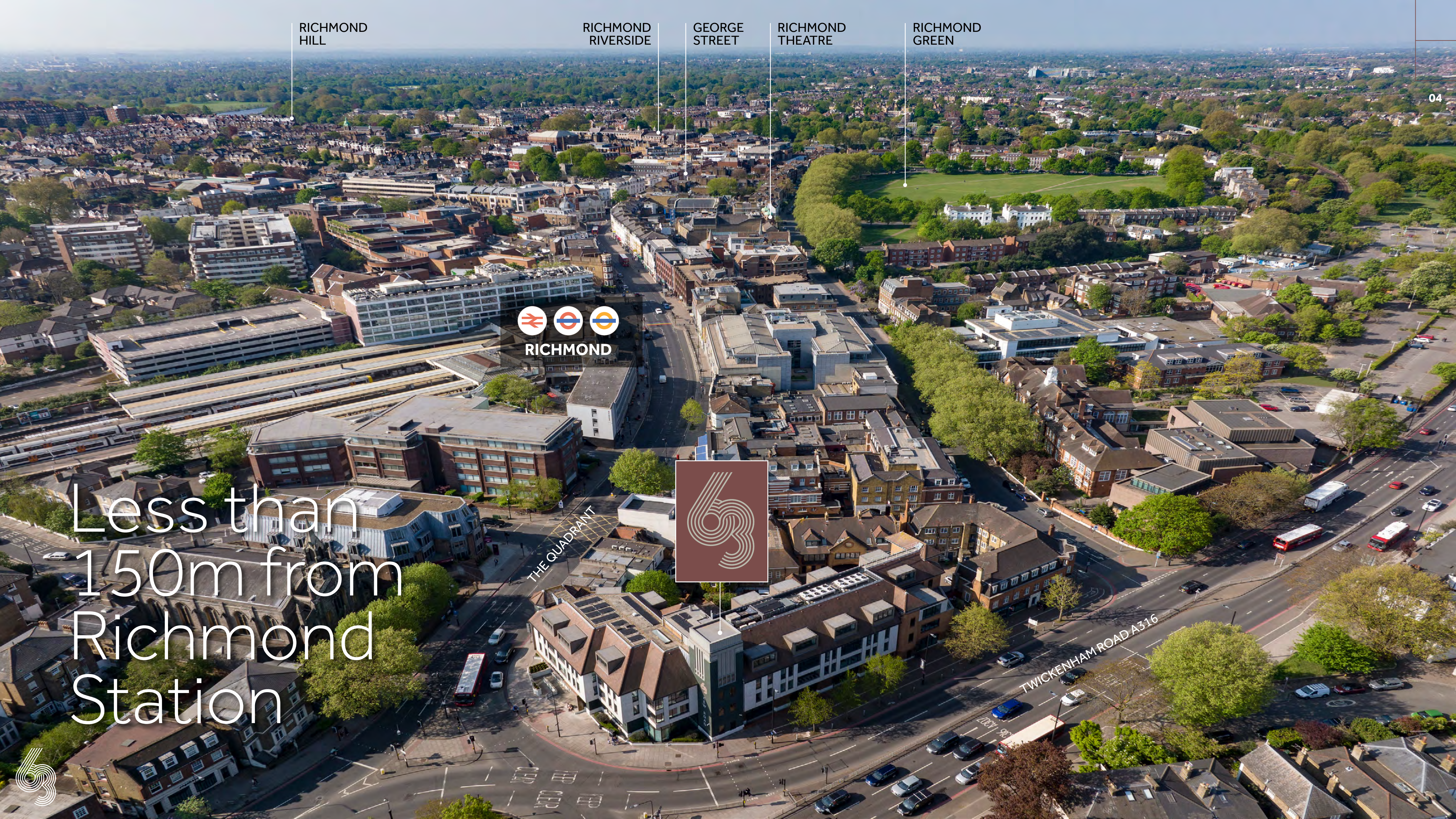
Re-imagined to cater for the modern, aspirational occupier

63 Kew Road has undergone a comprehensive sustainable refurbishment to provide contemporary and energy efficient, high quality office accommodation available from 2,294-33,414 sq ft.



Suite 1, 3rd Floor - Cat A+





RICHMOND
HILL

RICHMOND
RIVERSIDE

GEORGE
STREET

RICHMOND
THEATRE

RICHMOND
GREEN



Less than
150m from
Richmond
Station



THE QUADRANT

TWICKENHAM ROAD A316





Join the club

All occupiers will have access to the tenant Clubroom, which offers an 8-person meeting room bookable for internal and external client meetings by tenants. In addition, there is a coffee bar and breakout seating leading onto a communal terrace.

The WiFi enabled space offers the perfect setting for larger team meetings, catch ups with colleagues or meetings with an external client.

CGI of the Clubroom



CGI of the Terrace



CGI of the Clubroom



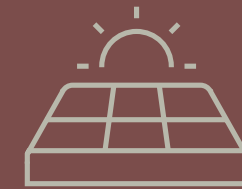
The detail



Energy usage reporting
and monitoring



New ground floor
Clubroom



PV solar roof panels,
to reduce occupier
energy costs



Bookable 8 person
boardroom



2 x passenger lifts



DDA compliant



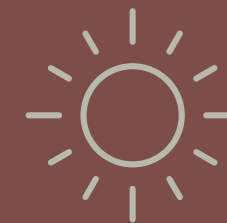
Concierge reception
with informal
meeting space



EPC Rating: B



New LED lighting with
motion sensors



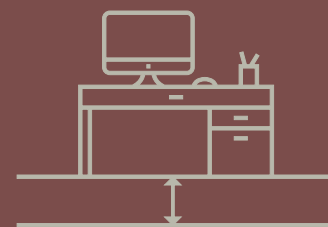
Outdoor terrace



Air conditioning with full air
quality monitoring & smart
zone control



Secure cycle storage with
44 spaces, exceeding BREEAM
requirements



Raised floors



New showers and changing
facilities, including lockers and
Dyson hairdryers



Refurbished WCs



Allocated onsite parking
available including
EV charging bays



4D Intelligent monitoring
environmental controls



WiredScore
Gold accreditation





Suite 1, 3rd Floor - Cat A+

Open plan
Cat A or
fully fitted
suites

High quality
finishes

Clever interior
design

Space for
a forward
thinking
business





2nd floor - Cat A



Floor Plans

The available accommodation comprises the following approx IPMS 3 floor areas:

Floor	sq ft	sq m
Third - Suite 1 - Cat A+	5,276	490.2
Third - Suite 2 - Cat A+	2,704	251.2
Second - Suite 1- Cat A	6,791	630.9
Second - Suite 2 - Cat A	2,294	213.1
First - Cat A	9,064	842.1
Ground - Cat A	7,285	676.8
Total	33,414	3,204.3
Reception & Clubroom	2,005	186.2

G



GROUND FLOOR

FIRST FLOOR

SECOND FLOOR

THIRD FLOOR

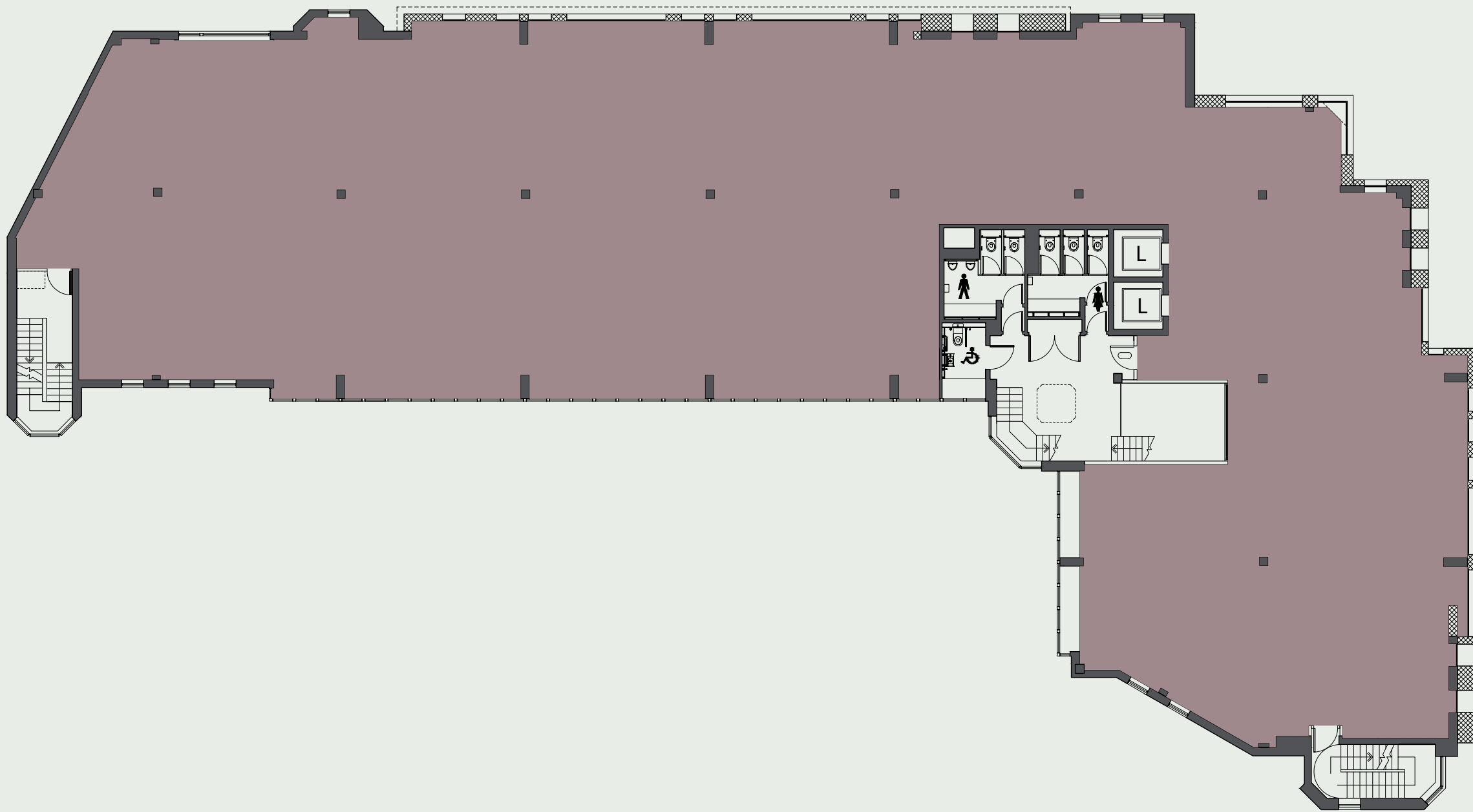


Floor Plans

The available accommodation comprises the following approx IPMS 3 floor areas:

Floor	sq ft	sq m
Third - Suite 1 - Cat A+	5,276	490.2
Third - Suite 2 - Cat A+	2,704	251.2
Second - Suite 1- Cat A	6,791	630.9
Second - Suite 2 - Cat A	2,294	213.1
First - Cat A	9,064	842.1
Ground - Cat A	7,285	676.8
Total	33,414	3,204.3
Reception & Clubroom	2,005	186.2

1



GROUND FLOOR



FIRST FLOOR

SECOND FLOOR

THIRD FLOOR

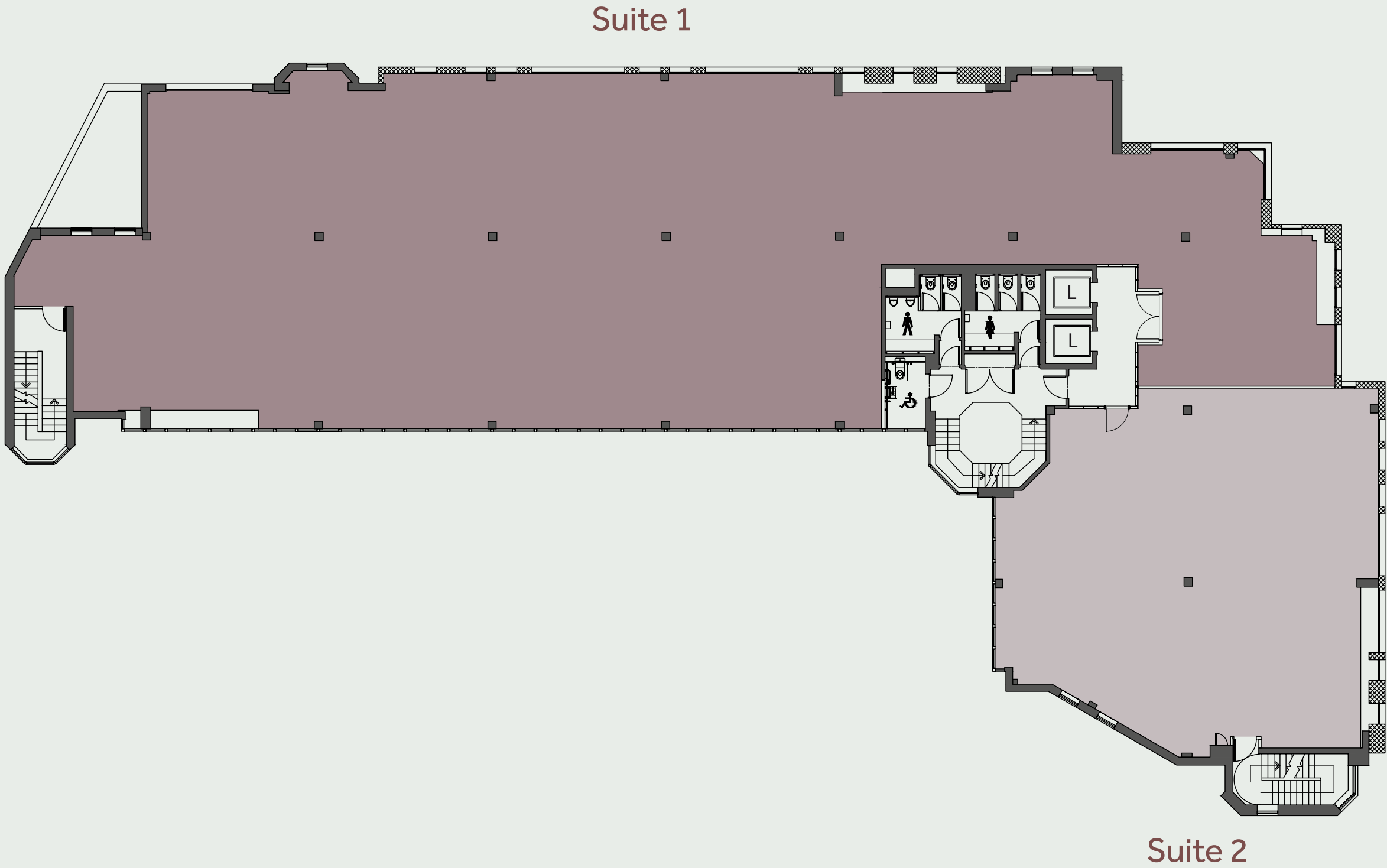


Floor Plans

The available accommodation comprises the following approx IPMS 3 floor areas:

Floor	sq ft	sq m
Third - Suite 1 - Cat A+	5,276	490.2
Third - Suite 2 - Cat A+	2,704	251.2
Second - Suite 1- Cat A	6,791	630.9
Second - Suite 2 - Cat A	2,294	213.1
First - Cat A	9,064	842.1
Ground - Cat A	7,285	676.8
Total	33,414	3,204.3
Reception & Clubroom	2,005	186.2

2

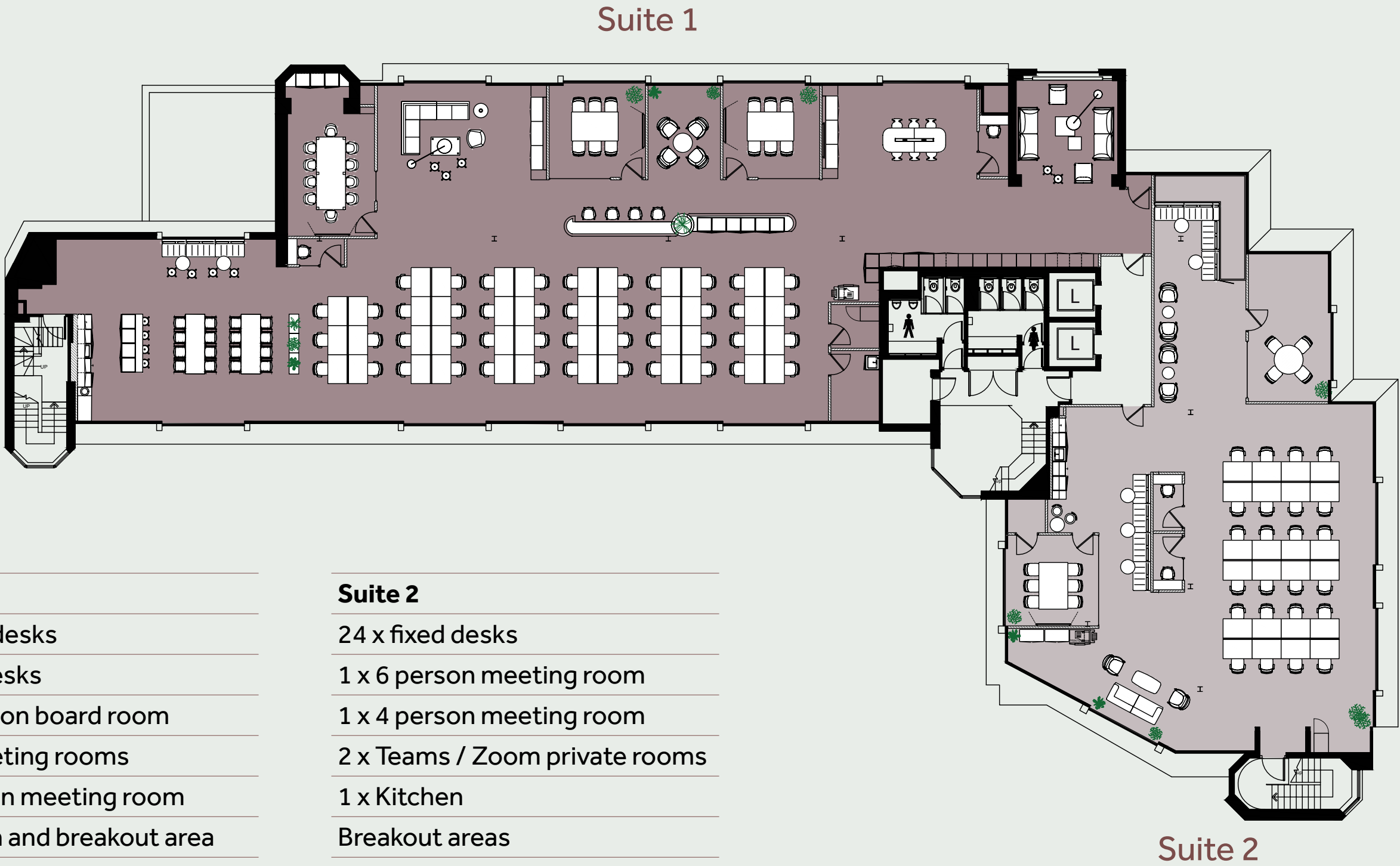


Floor Plans

The available accommodation comprises the following approx IPMS 3 floor areas:

Floor	sq ft	sq m
Third - Suite 1 - Cat A+	5,276	490.2
Third - Suite 2 - Cat A+	2,704	251.2
Second - Suite 1- Cat A	6,791	630.9
Second - Suite 2 - Cat A	2,294	213.1
First - Cat A	9,064	842.1
Ground - Cat A	7,285	676.8
Total	33,414	3,204.3
Reception & Clubroom	2,005	186.2

3



Suite 1

- 38 x fixed desks
- 10 x hot desks
- 1 x 10 person board room
- 2 x 6 x meeting rooms
- 1 x 4 person meeting room
- 1 x Kitchen and breakout area
- 2 x Teams / Zoom private rooms
- 1 x Comms room
- 1 x Printing room
- 1 x Entrance waiting area

Suite 2

- 24 x fixed desks
- 1 x 6 person meeting room
- 1 x 4 person meeting room
- 2 x Teams / Zoom private rooms
- 1 x Kitchen
- Breakout areas
- 1 x Entrance waiting area

GROUND FLOOR

FIRST FLOOR

SECOND FLOOR



THIRD FLOOR

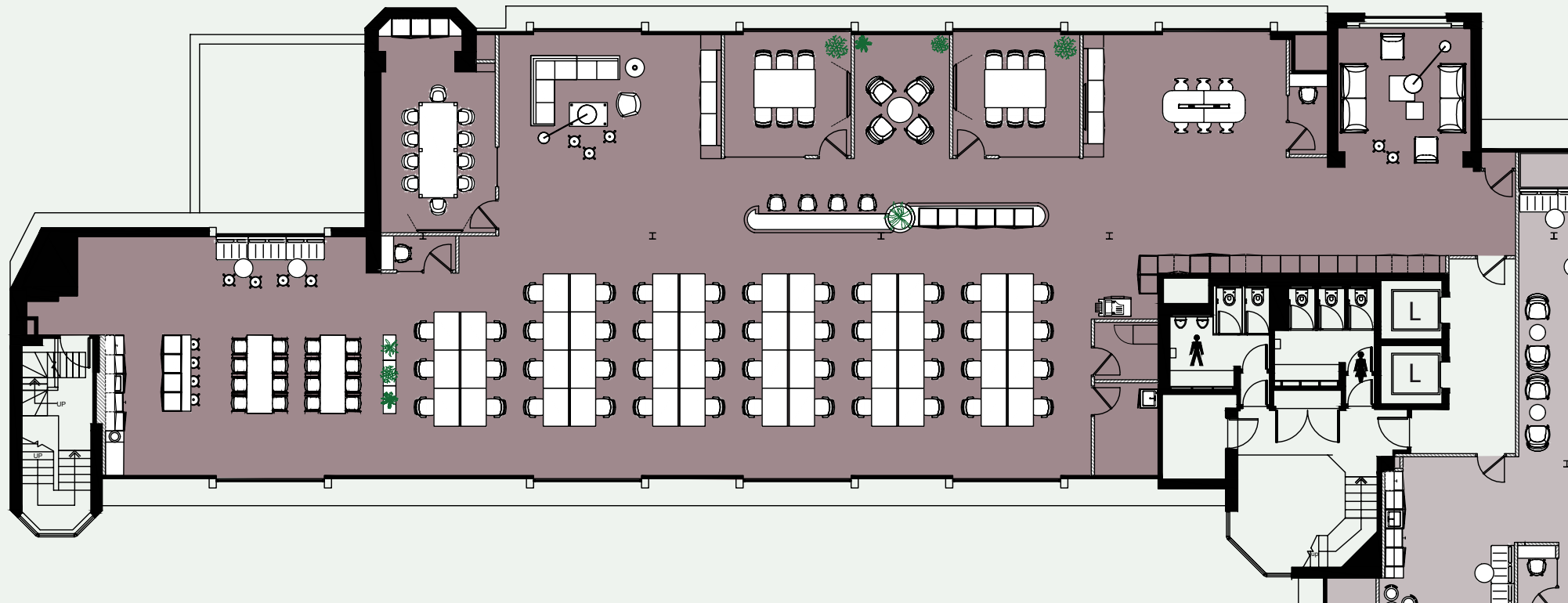


Third floor

Fully Fitted: Suite 1-5, 276 sq ft



- Suite 1**
- 38 x Fixed desks
 - 10 x Hot desks
 - 1 x 10 person board room
 - 2 x 6 x meeting rooms
 - 1 x 4 person meeting room
 - 1 x Kitchen and breakout area
 - 2 x Teams / Zoom private rooms
 - 1 x Comms room
 - 1 x Printing room
 - 1 x Entrance waiting area

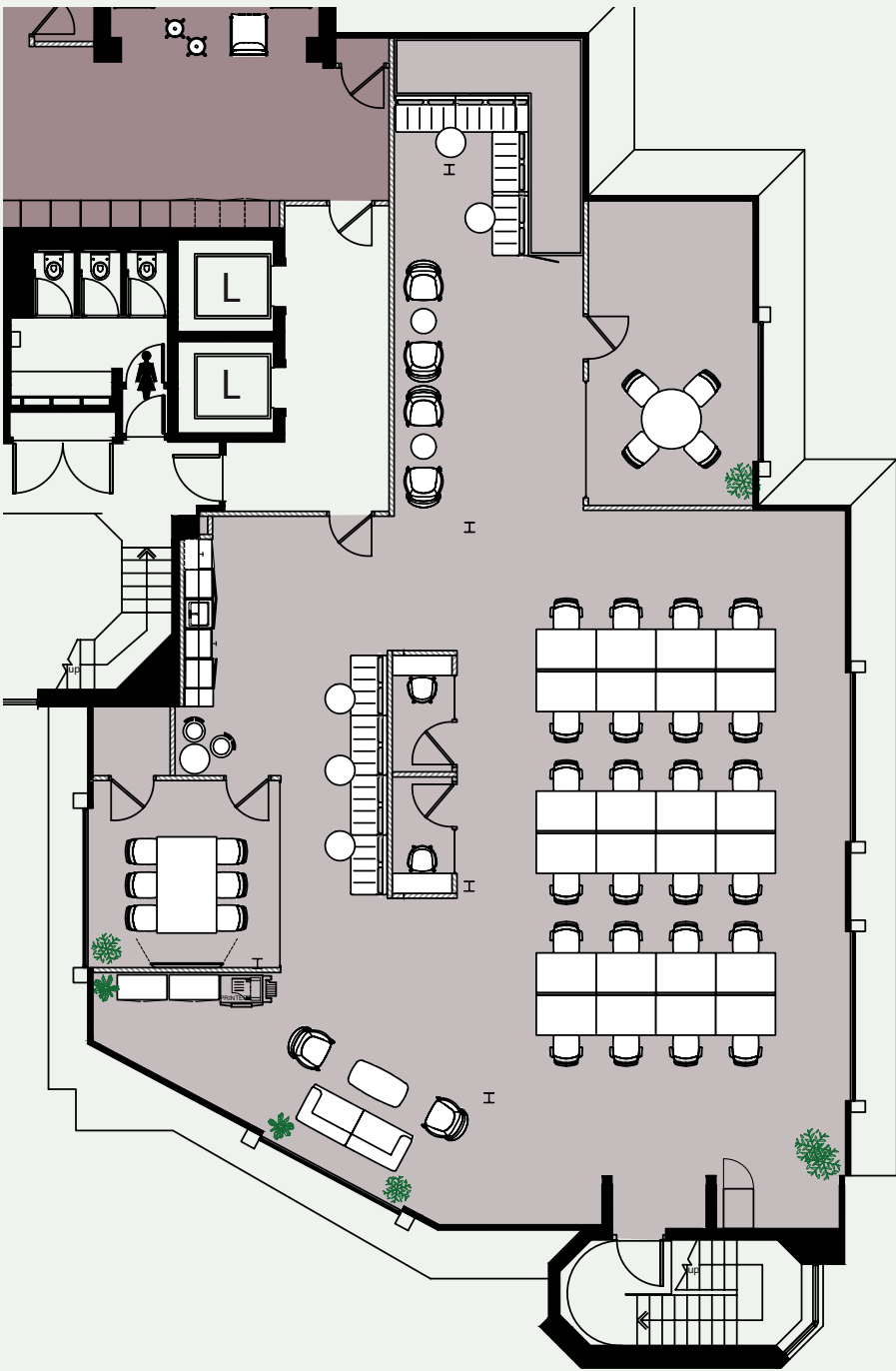


Third floor

Fully Fitted: Suite 2-2,704 sq ft



- Suite 2
- 24 x fixed desks
 - 1 x 6 person meeting room
 - 1 x 4 person meeting room
 - 2 x Teams / Zoom private rooms
 - 1 x Kitchen
 - Breakout areas
 - 1 x Entrance waiting area



Perfectly situated



Richmond is one of London's most desirable and affluent locations. It offers the modern business the perfect combination of connectivity, vibrant and varied retail and leisure, and over 5,000 acres of green space for boosting employee wellbeing.



Spoilt for choice



RESTAURANTS & CAFÉS

- 1 Rock & Rose
- 2 Four Regions
- 3 Cinnamon Bazar
- 4 Starbucks
- 5 Tortilla
- 6 Carmona
- 7 Costa
- 8 Greggs
- 9 Buenos Airies
- 10 Caffé Nero
- 11 Coffeeology
- 12 Gail's Bakery
- 13 No1 Duke Street
- 14 Itsu
- 15 Leon
- 16 Joe The Juice
- 17 Sticks 'n' Sushi
- 18 The Ivy Café
- 19 Megan's
- 20 Cocotte
- 21 Ottolenghi (Coming soon)
- 22 Scotts
- 23 Brindisa
- 24 Bill's
- 25 Noci
- 26 Gaucho
- 27 Petersham Nurseries



PUBS & BARS

- 1 The Orange Tree
- 2 The Railway Tavern
- 3 Tap Tavern
- 4 The Cricketers
- 5 The Prince's Head
- 6 The White Swan
- 7 The White Cross
- 8 Be At One



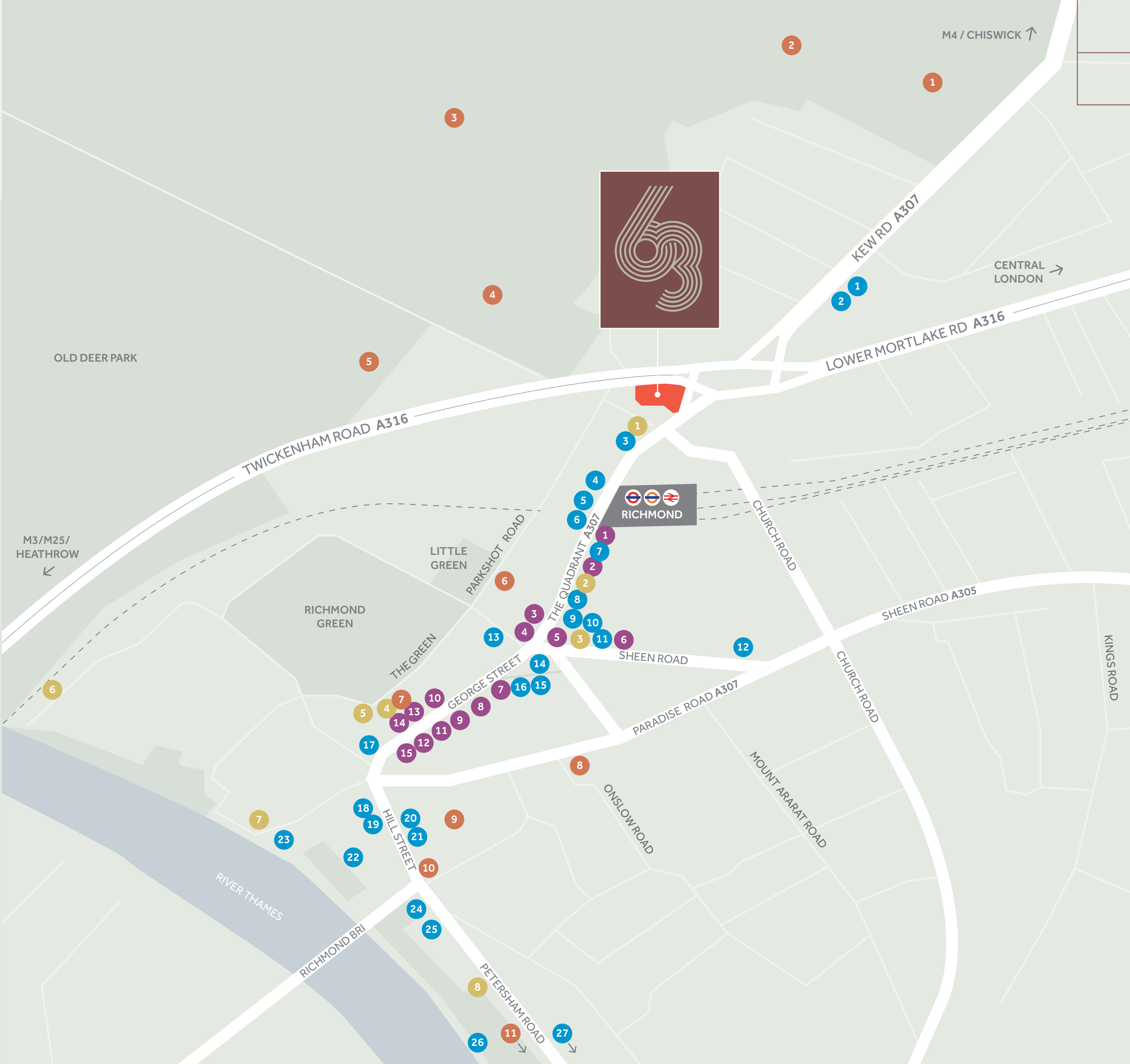
SHOPS

- 1 Amazon Fresh
- 2 Sainsbury's Local
- 3 Sweaty Betty
- 4 Aesop
- 5 Lulu Lemon
- 6 Waitrose
- 7 Tesco Express
- 8 Gant
- 9 H&M
- 10 Boots
- 11 WH Smith
- 12 M&S
- 13 Anthropologie
- 14 Reiss
- 15 Oliver Bonas



LEISURE

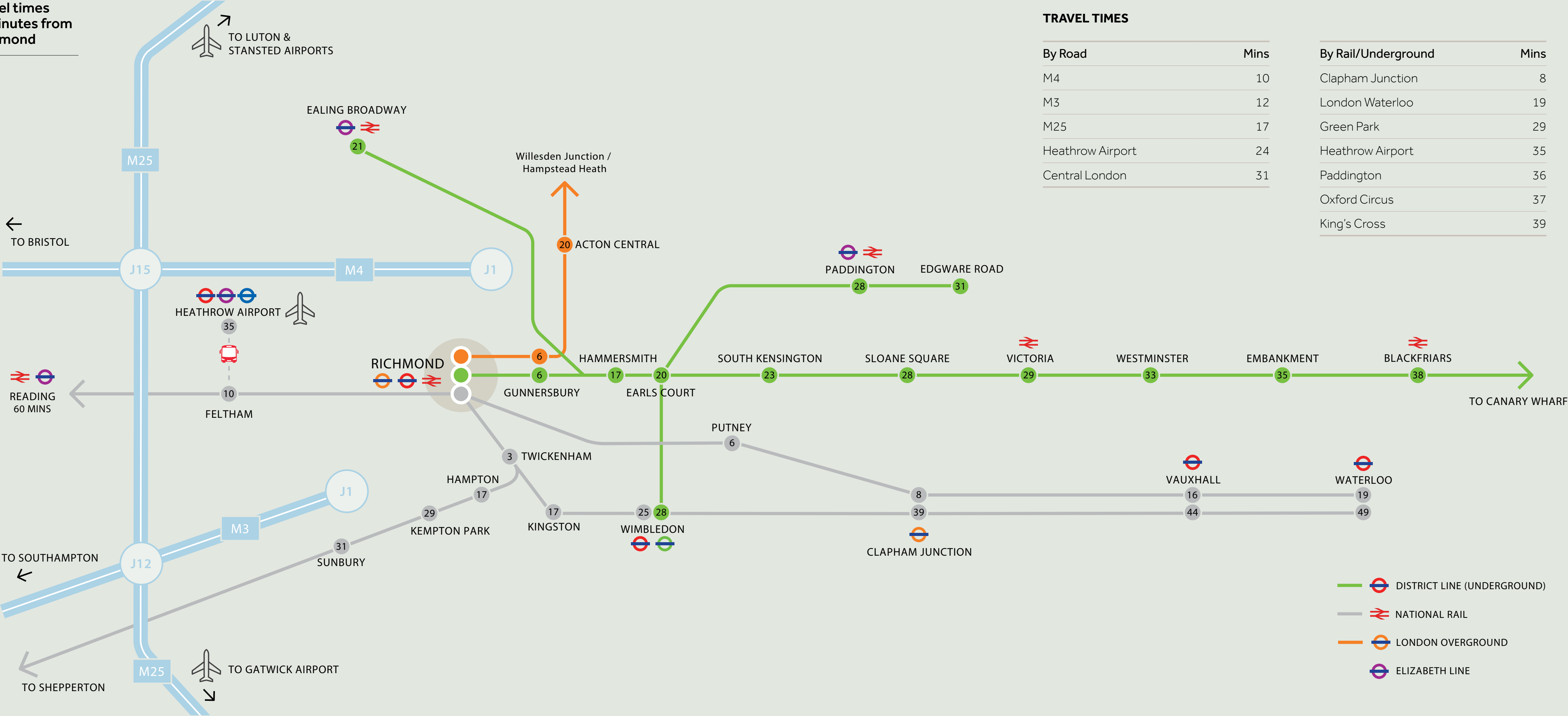
- 1 Richmond Tennis Club
- 2 Old Deer Park Sports Club
- 3 Royal Mid-Surrey Golf Club
- 4 Richmond Rugby Club
- 5 Pools on the Park
- 6 Richmond Theatre
- 7 Thirdspace
- 8 Travelodge
- 9 Richmond Hill Health Club
- 10 Odeon Cinema
- 11 Bingham Riverhouse



Travel with ease



Travel times
in minutes from
Richmond





KEW ROAD

RICHMOND-UPON-THAMES TW9 2NQ

VIEWINGS

Strictly by appointment through the joint agents:



**BNP PARIBAS
REAL ESTATE**

Ed Smith

07836 656 538

edward.smith@realestate.bnpparibas

James Little

07350 404 732

james.little@realestate.bnpparibas



Olivia Fryer

07951 041 788

olivia.fryer@savills.com

Pip Edwards

07816 184 021

pip.edwards@savills.com

Follow us:

MISREPRESENTATION ACT 1967

BNP Paribas Real Estate and Savills for themselves, hereby give notice that: (i) These particulars do not constitute any part of an offer or contract. (ii) BNP Paribas Real Estate and Savills accept no legal responsibility for any statement or representation whether written, oral or implied or whether contained in any advertisement particulars or other matters issued by any correspondence entered into by them and whether made in any antecedent present or subsequent enquiries or negotiations. (iii) Neither BNP Paribas Real Estate and Savills, their principals, agents, servants or representatives have any authority whatsoever to make or give any representation or warranty whatsoever whether written or implied in relation to this property. (iv) Any intending purchaser must satisfy himself by inspection or otherwise as to the correctness of any antecedent present or subsequent statements or representations, and should not rely upon the same unless he has satisfied himself accordingly. (v) Unless otherwise stated, all prices and rents are quoted exclusive of Value Added Tax (VAT). Any intending purchasers or lessees must satisfy themselves independently as to the incidence of VAT in respect of any transaction. Details prepared February 2025.